



MACROM

General catalogue Electric
Mobility September 2021





Macrom e-bike is the new range of folding e-bikes with pedal assistance

Technological vision, progress, materials of the highest quality and attractive design are just some of the design and construction features with which Macrom, one of the leaders in the electronics market for over thirty years, offers this new line of products to the market.

New e-bike models each designed to meet specific mobility, transport and handling needs. All equipped with pedal assistance with electric motor and at the same time foldable to facilitate transport.

The entire range offers disc brakes as standard for maximum safety, the frame in aluminum or magnesium alloys as a guarantee of sturdiness and impeccable design.

Buying a Macrom e-bike means choosing technology, quality of details, also safety of a capillary network of dedicated Service Centers, always ready to offer support at any time.

More information on the complete range and services offered can be found on the website www.ebike-macrom.com.



Cervinia

*Off
road*

The folding electric fat bike
with pedal assistance,
created for those who experience
the bike with determination
and passion.



Cervinia

20" FAT Folding E-Bike



Folding frame



Removable battery



36V/10000mAh battery



Locked-Out fork



Shimano 7 selector



Front/rear disc brakes



LCD Display



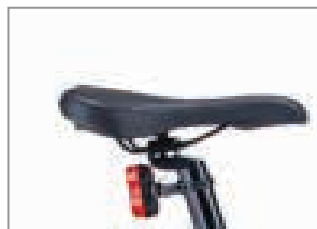
Rear luggage rack



250W/36V motor



Saddle in Gel



Foldable pedals



Front/rear LED lights



Cervinia

20" FAT Folding E-Bike

The new electric Fat bike Cervinia, foldable and with pedal assistance uses a sport geometry aluminum alloy frame. A product that combines all safety and stability of a vehicle designed for Off-Road. The ideal accomplice to live your daily life adventure in the urban jungle.

Available colors Black and White.



Mechanics

Size	156 x 55 x110 cm
Total weight	24.7 kg
Frame	Aluminum alloy
Cambio Gear box	7-speed Shimano
Tires	20*4 inches (50,8*10 cm)

Battery

Installation	Removable
Capacity	36 Volts 10000 mAh
Nominal input	36 Volts
Nominal power	360 Watts
Charging time	180 - 240 minutes
Charging current	1.5 Ampere
Battery life	Over 500 charges

Engine

Type	Brushless electric
Nominal power	250 Watts
	≥80%
Nominal voltage	36 Volts
Nominal torque	32 Nm

Functions

Speed	* 25 Km/h
Autonomy	* 35/40 Km
Maximum load	≤ 100 kg
Illumination	Front and rear LED lighting
Operation	Electric assisted pedaling

* The range and maximum speed depend on the user's weight, the speed and the slope of the route.



Milano 2.0

*Last
mile*

Traffic in the morning, stress and city chaos are a problem? The solution is there and it's called e-bike Milano.



Milano 2.0

20" Folding E-Bike



Folding frame



Removable battery



36V/8800mAh battery



Shimano 6 selector



Front/rear disc brakes



Rear led light



LCD Display



Rear luggage rack



250W/36V motor



Saddle in Gel



Foldable pedals



Front led light



Milano 2.0

20" Folding E-Bike

The new electric bike Milano 2.0, foldable and with pedal assistance improves its performance thanks to the larger battery, the new led display and renewed graphics.

Rechargeable at any time, foldable, stable and safe.

The ideal accomplice to live your daily adventure in the urban jungle.

Available color Black.



Mechanics

Size	156 x 55 x110 cm
Total weight	23 kg
Frame	Aluminum alloy
Cambio Gear box	6-speed Shimano
Tires	20*2 inches (50,8*5 cm)

Battery

Installation	Removable
Capacity	36 Volts 8800 mAh
Nominal input	36 Volts
Nominal power	320 Watts
Charging time	240 - 360 minutes
Charging current	1.5 Ampere
Battery life	Over 500 charges



Engine

Type	Brushless electric
Nominal power	250 Watts
	≥80%
Nominal voltage	36 Volts
Nominal torque	32 Nm

Functions

Speed	* 25 Km/h
Autonomy	* 35/40Km
Maximum load	≤ 100 kg
Illumination	Front and rear LED lighting
Operation	Electric assisted pedaling

* The range and maximum speed depend on the user's weight, the speed and the slope of the route.

X-Scooter

Practical, light and functional, thanks to the size of the 10 "wheels and the rear suspension, combines the safety and comfort of a vehicle of transport that will become a way of life. Experience the city in simplicity and comfort.



X-Scooter

Foldable 10" electric scooter



Folding frame



10 inch wheels



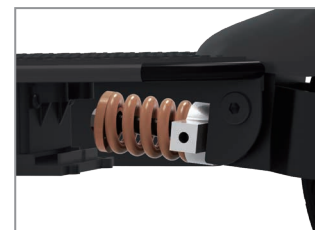
Prick-resistance



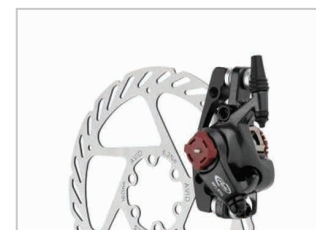
Stand for parking



Rear shock absorber



Front/rear disc brakes



LCD display



Multicolored front light



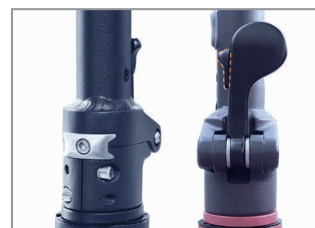
350W/36V motor



Humming seal



Safety lock



Control app



X-Scooter

Foldable 10" electric scooter

Rechargeable at any time, foldable and stable and safe.

Thanks to 10-inch prick-resistance tires with high wear resistance, you can travel over 3000 km in complete safety.

The control APP is available for free and can be downloaded from Google Play and the Apple Store.



Activating the Bluetooth function allows you to adjust the parameters of your electric scooter.

Available in color, Red and Black.



Mechanics

Size	120 x 120 x handlebar 55 cm
Total weight	16.5kg
Frame	Aluminum alloy
Shock absorber	Back
Tires	10 * 2.125 inches (25*5.3 cm)

Battery

Installation	Removable
Capacity	36 Volts 7500 mAh
Nominal input	36 Volts
Nominal power	270 Watts
Charging time	240 - 360 minutes
Charging current	1.5 Ampere
Battery life	Over 500 charges

Engine

Type	Brushless electric
Nominal power	350 Watts
	≥80%
Nominal voltage	36 Volts
Nominal torque	32 Nm

Functions

Speed	* 25 Km/h
Autonomy	* 25/30Km
Maximum load	≤ 100 kg
Slope	20°
Illumination	Front Led (RGB) - rear Stop and light

* The range and maximum speed depend on the user's weight, the speed and the slope of the route.

ebike-macrom.com

CAT SEPT 2021 MAM.ENG



G.M.A. ITALIA s.r.l.
V. Di Vittorio, 7/33 - 20017 - Rho (MI) Italy
Tel 02.33406189 Fax 02.3085784

info@macrom.it