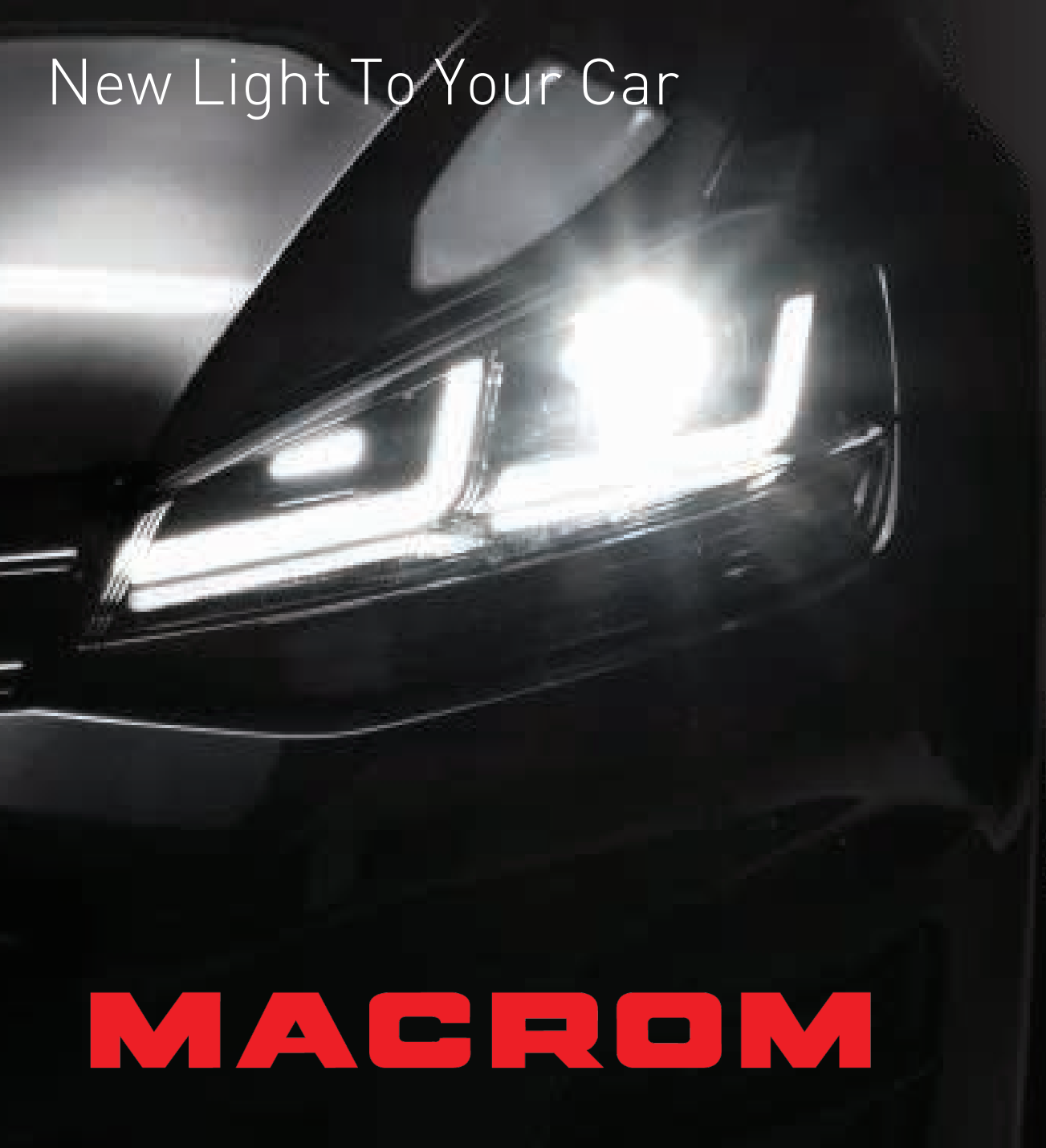


HEADLIGHT LED

New Light To Your Car



MACROM

*General Catalogue
November 2022*



LEN transformation KIT



LED transformation KIT



POWER series LEDs



Can-Bus STABILIZERS,
ACCESSORIES Turn off lights



Our mission is to make
your pleasant journey

For over 30 years we have been
designing and manufacturing products
aimed at making your travels pleasant.

The Macrom range dedicated to LED
automotive lighting is made using
innovative and avant-garde solutions.

Our extensive catalog is designed
to offer you the highest quality at a
competitive price.

KIT trasformazione LEN

LEN MACROM conversion KITs are developed for use with lenticular headlights and conversion from Xenon to LED.

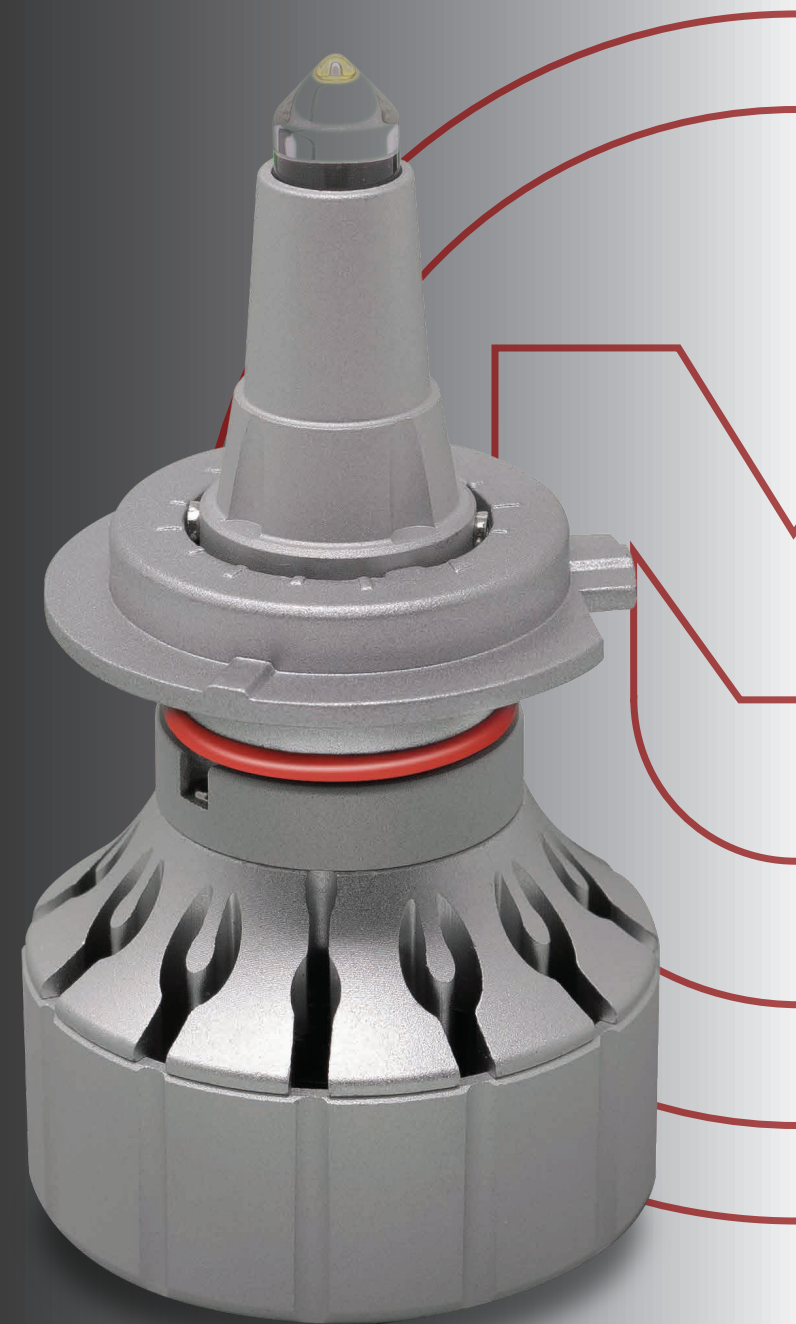
These kits have been designed to be installed in lenticular headlights, increasingly popular in the latest generation cars.

In these headlights it is the lens already present that diverts the light output where you need it, avoiding dazzling other vehicles. They are therefore not suitable for cars with a parabolic headlight.

The LEN technical solution generates over 56000 LUX per kit with a beam depth of over 130 meters and a color temperature of 6500K.

The lamp body entirely in aluminum used as a heat sink, and to ensure greater stability a low-noise level fan is in aid of heat dissipation.

Installation is extremely easy thanks to the removable base. In vehicles with 55W standard lamps, accessories for warning light are not required for signaling errors.



MKDLEN

MKH7LEN

LED HEADLIGHT KIT FOR LENTICULAR HEADLIGHT **LAMP D**
55W 12V, 56000 LUMEN (per kit), 6500K

The D model lamps, compatible with the D1R / D1S, D2R / D2S, D3R / D3S and D4R / D4S series lamps they must be connected via the lights signal or upstream of the original Xenon control unit or via the lights control



Low beam light



Beam light



360 ° light



Can-Bus

Technical specifications

ECE code	D
Vehicle type	Cars
Volt	12
Power supply (Volt)	9-18
Power (Watt)	55
Color temperature (K)	6500K
Lumen	56000
Lamp type	Lenticular projector
Technology	LED
Adjustable LED trim	No

LED HEADLIGHT KIT FOR LENTICULAR HEADLIGHT **LAMP H7**
55W 12V, 56000 LUMEN (per kit), 6500K



Low beam light



Beam light



360 ° light



Can-Bus

Technical specifications

ECE code	H7
Vehicle type	Cars
Volt	12
Power supply (Volt)	9-18
Power (Watt)	55
Color temperature (K)	6500K
Lumen	56000
Lamp type	Lenticular projector
Technology	LED
Adjustable LED trim	No

NOTE: The lumen value indicated refers to the total value emitted by both lights and therefore indicates the total per set of lamps

MKH11LEN

LED HEADLIGHT KIT FOR LENTICULAR HEADLIGHT **LAMP H11**
55W 12V, 56000 LUMEN (per kit), 6500K



Low beam light



Beam light



360 ° light



Can-Bus

Technical specifications

ECE code	H11
Vehicle type	Cars
Volt	12
Power supply (Volt)	9-18
Power (Watt)	55
Color temperature (K)	6500K
Lumen	56000
Lamp type	Lenticular projector
Technology	LED
Adjustable LED trim	No

MKHB3LEN

LED HEADLIGHT KIT FOR LENTICULAR HEADLIGHT **LAMP HB3**
55W 12V, 56000 LUMEN (per kit), 6500K



Low beam light



Beam light



360 ° light



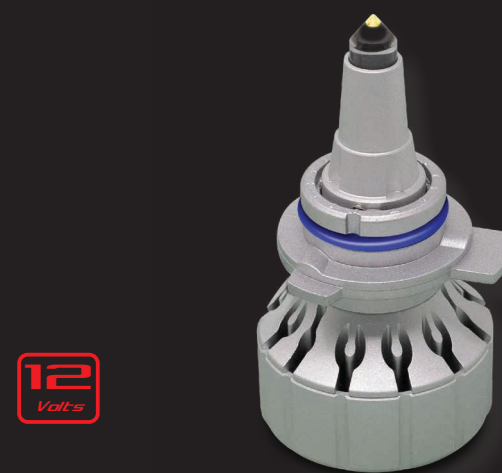
Can-Bus

Technical specifications

ECE code	HB3
Vehicle type	Cars
Volt	12
Power supply (Volt)	9-18
Power (Watt)	55
Color temperature (K)	6500K
Lumen	56000
Lamp type	Lenticular projector
Technology	LED
Adjustable LED trim	No

MKHIR2LEN

LED HEADLIGHT KIT FOR LENTICULAR HEADLIGHT **LAMP HIR2**
55W 12V, 56000 LUMEN (per kit), 6500K



Low beam light



Beam light



360 ° light



Can-Bus

Technical specifications

ECE code	HIR2
Vehicle type	Cars
Volt	12
Power supply (Volt)	9-18
Power (Watt)	55
Color temperature (K)	6500K
Lumen	56000
Lamp type	Lenticular projector
Technology	LED
Adjustable LED trim	No

NOTE: The lumen value indicated refers to the total value emitted by both lights and therefore indicates the total per set of lamps

LED transformation KIT

The innovative technical solutions of the **MACROM LIGHT** LED transformation KITS do not only concern the LED chip used but also the lamp body, as well as the heatsink, entirely in aluminum to improve heat dissipation, so much so that it was possible to eliminate the cooling fan.

It is also possible, in the H7, to adjust the angle of the lamp body with respect to the base, to optimize the light beam on projectors equipped with lens.

Asymmetrical light projection / Standard passive heatsink.



MKH7SH

KIT HEADLIGHT LED LIGHT SINGLE **LAMP H7 SHORT**
12V, 3400 LUMEN (per kit), 6000K, **6 CHIP SEOL**

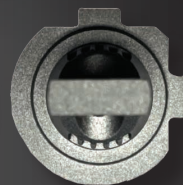


PX26d

Adjustable LED trim



Installation with
parabolic spotlight



Installation with
lenticular spotlight

Not polarized



ECE dimensions



No adapters



Low beam light



Beam light

Technical specifications

ECE code	H7
Base	PX26d
Vehicle type	Cars, Motorcycles
Volt	12
Power supply (Volt)	9-18
Power (Watt)	13
Color temperature (K)	6000K
Lumen	3400
Lamp type	Projector
Technology	LED
Adjustable LED trim	Yes

Benefit



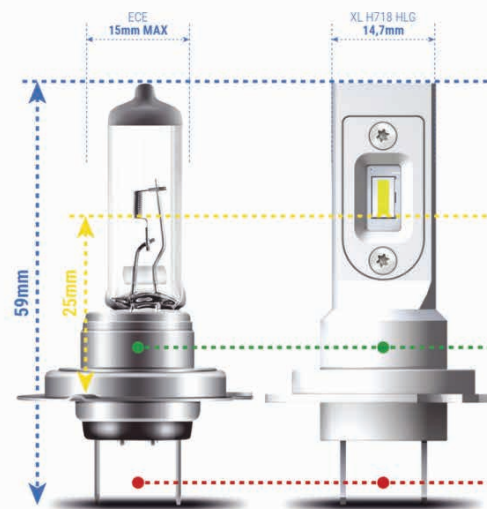
The MKHSH lamp complies with ECE regulations and is therefore compatible with any headlight with H7 and / or H18 housing.



Thanks to the small size of the lamp body, it does not require the use of adapters for installation.



The electronic technology used allows compatibility with all vehicles and does not require the polarity of the power supply +/- to be respected.



Height and diameter of the ampoule

The lamp has an identical height to the H7 and H18 halogen lamp. Adapters are no longer required for installation.

According to ECE regulations, the diameter of the bulb must not exceed 15mm. Our lamp has a diameter of 14.7mm in compliance with the ECE regulation.

Position of the LED

The positioning of the LED reflects the ECE R37 standard which provides for the positioning of the filament of the lamp inside the headlight. The LED will emit light at the exact point inside the light. Greater diffusion of light without shadow areas.

Body Lamp

Diameter and height identical to the original lamp make the installation compatible with all cars.

Non-polarized power supply

The reverse polarity stabilizer allows connection without observing the power supply polarity +/- . ZERO risk of damage and compatible with all vehicle models.

NOTE: The lumen value indicated refers to the total value emitted by both lights and therefore indicates the total per set of lamps

MKH7

KIT HEADLIGHT LED LIGHT SINGLE **LAMPS H7**
12V, 13W, 3400 LUMEN (per kit), 6000K, **6 CHIP** SEOUL



PX26d



Low beam light

Beam light

Technical specifications

ECE code	H7
Base	PX26d
Vehicle type	Cars, Motorcycles
Volt	12
Power supply (Volt)	9-18
Power (Watt)	13
Color temperature (K)	6000K
Lumen	3400
Lamp type	Projector
Technology	LED
Adjustable LED trim	Yes

MKH3SH

KIT HEADLIGHT LED LIGHT SINGLE **LAMPS H3 SHORT**
12V, 13W, 3000 LUMEN (per kit), 6000K, **8 CHIP** COB 5530



PK22s



Low beam light

Beam light

Technical specifications

ECE code	H3
Base	PK22s
Vehicle type	Cars, Motorcycles
Volt	12
Power supply (Volt)	9-18
Power (Watt)	13
Color temperature (K)	6000K
Lumen	3000
Lamp type	Projector
Technology	LED
Adjustable LED trim	No

MKH1SH

KIT HEADLIGHT LED LIGHT SINGLE **LAMPS H1 SHORT**
12V, 13W, 3000 LUMEN (per kit), 6000K, **8 CHIP** COB



P14.5s



Low beam light

Beam light

Technical specifications

ECE code	H1
Base	P14.5s
Vehicle type	Cars, Motorcycles
Volt	12
Power supply (Volt)	9-18
Power (Watt)	13
Color temperature (K)	6000K
Lumen	3000
Lamp type	Projector
Technology	LED
Adjustable LED trim	No

MKH8

KKIT HEADLIGHT LED LIGHT SINGLE **LAMPS H8/H9/H11/H16**
12V, 13W, 3400 LUMEN (per kit), 6000K, **6 CHIP** SEOUL



PGJ19



Low beam light

Beam light

Technical specifications

ECE code	H8/H9/H11/H16
Base	PGJ19-1, PGJ19-2, PGJ19-PGJ19-5
Vehicle type	Cars, Motorcycles
Volt	12
Power supply (Volt)	9-18
Power (Watt)	13
Color temperature (K)	6000K
Lumen	3400
Lamp type	Projector
Technology	LED
Adjustable LED trim	No

NOTE: The lumen value indicated refers to the total value emitted by both lights and therefore indicates the total per set of lamps

MKHB3

KIT HEADLIGHT LED LIGHT SINGLE **LAMPS H10/HB3**
12V, 13W, 3400 LUMEN (per kit), 6000K, **6 CHIP** SEOUL



P20d, PY20d



Low beam light Beam light

Technical specifications

ECE code	H10/HB3 (9005)
Base	P20d, PY20d
Vehicle type	Cars, Motorcycles
Volt	12
Power supply (Volt)	9-18
Power (Watt)	13
Color temperature (K)	6000K
Lumen	3400
Lamp type	Projector
Technology	LED
Adjustable LED trim	No

MKHIR2

KIT HEADLIGHT LED LUCE SINGOLA **LAMPADE HIR2**
12V, 13W, 3400 LUMEN (per kit), 6000K, **6 CHIP** SEOUL



PX22d



Low beam light Beam light

Technical specifications

ECE code	HIR2 (9012)
Base	PX22d
Vehicle type	Cars, Motorcycles
Volt	12
Power supply (Volt)	9-18
Power (Watt)	13
Color temperature (K)	6000K
Lumen	3400
Lamp type	Projector
Technology	LED
Adjustable LED trim	No

MKHB4

KIT HEADLIGHT LED LIGHT SINGLE **LAMPS HB4**
12V, 13W, 3000 LUMEN (per kit), 6000K, **6 CHIP** COB 5530



P22d



Low beam light Beam light

Technical specifications

ECE code	HB4 (9006)
Base	P22d
Vehicle type	Cars, Motorcycles
Volt	12
Power supply (Volt)	9-18
Power (Watt)	13
Color temperature (K)	6000K
Lumen	3000
Lamp type	Projector
Technology	LED
Adjustable LED trim	No

MKH4SH

KIT HEADLIGHT LED LIGHT DOUBLE **LAMPS H4 SHORT**
12V, 13W, 8000 LUMEN (per kit), 6000K, **12 CHIP** COB 4420



P43t



No polarized



No adapters



ECE dimensions



Low beam light



Beam light

Technical specifications

ECE code	H4 (9006)
Base	P43t
Vehicle type	Cars, Motorcycles
Volt	12
Power supply (Volt)	9-18
Power (Watt)	13
Color temperature (K)	6000K
Lumen	8000
Lamp type	Projector
Technology	LED
Adjustable LED trim	No

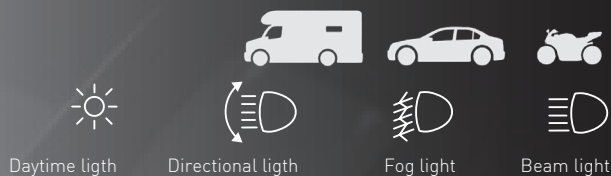
NOTE: The lumen value indicated refers to the total value emitted by both lights and therefore indicates the total per set of lamps

MKH15

KIT HEADLIGHT LED LIGHT DOUBLE **LAMPS H15**
12V, 13W, 3400 LUMEN (per kit), 6000K, **16 CHIP** SEOUL



PGJ23t-1



Technical specifications

ECE code	H15
Base	PGJ23t-1
Vehicle type	Cars, Motorcycles
Volt	12
Power supply (Volt)	9-18
Power (Watt)	13
Color temperature (K)	6000K
Lumen	3400
Lamp type	Projector / Accessories / Services
Technology	LED
Adjustable LED trim	No

MKP13

LAMPADE LED **P13W** PG18.5d-1
12V, 13W, 3400 LUMEN (per kit), 6000K, **6 CHIP** WICOP



PG18.5d-1



Low beam light Beam light

Technical specifications

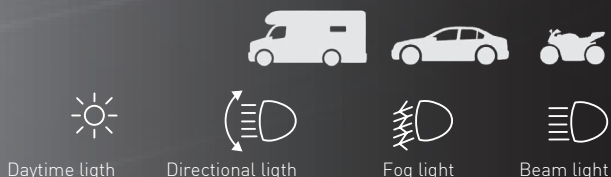
ECE code	P13W
Base	PG18.5d-1
Vehicle type	Camion, Automobili, Motocicli
Volt	12
Power supply (Volt)	9-18
Power (Watt)	13
Color temperature (K)	6000K
Lumen	3400
Lamp type	Proiettore
Technology	LED
Adjustable LED trim	No

MKH27

H27 LED LAMPS (880/881)
12V, 13W, 3400 LUMEN (per kit), 6000K, **6 CHIP** WICOP



PG13, PGJ13

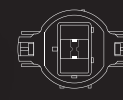


Technical specifications

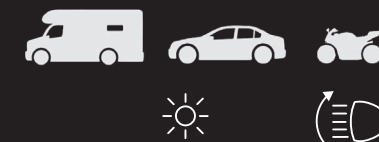
ECE code	H27W/1 (880), H27W/2 (881)
Base	PG13, PGJ13
Vehicle type	Trucks, Cars, Motorcycles
Volt	12
Power supply (Volt)	9-18
Power (Watt)	13
Color temperature (K)	6000K
Lumen	3400
Lamp type	Projector / Accessories / Services
Technology	LED
Adjustable LED trim	No

MKPSX24

PSX24W PG20-4 LED LAMPS
12V, 13W, 3400 LUMEN (per kit), 6000K, **6 CHIP** WICOP



PG20-4



Daytime light Directional light

Technical specifications

ECE code	PSX24W
Base	PG20-4
Vehicle type	Trucks, Cars, Motorcycles
Volt	12
Power supply (Volt)	9-18
Power (Watt)	13
Color temperature (K)	6000K
Lumen	3400
Lamp type	Accessories / Services
Technology	LED
Adjustable LED trim	No

NOTE: The lumen value indicated refers to the total value emitted by both lights and therefore indicates the total per set of lamps

POWER series LED

POWER series spare LED lamps range



ML9330

H8 POWER SERIES LED LAMPS
12V, 5.6W, 1560 LUMEN (per kit), **21 CHIP** 2835



PGJ19-1



Technical specifications

ECE code	H8
Base	PGJ19-1
Vehicle type	Cars
Volt	12
Power supply (Volt)	10-16
Power (Watt)	5.6
Color temperature (K)	6000K
Lumen	1560
Lamp type	Accessories / Services
Technology	LED
Adjustable LED trim	No

ML9340

H11 POWER SERIES LED LAMPS
12V, 5.6W, 1560 LUMEN (per kit), **21 CHIP** 2835



PGJ19-2



Technical specifications

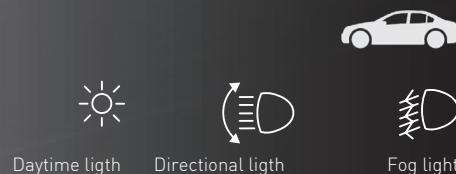
ECE code	H11
Base	PGJ19-2
Vehicle type	Cars
Volt	12
Power supply (Volt)	10-16
Power (Watt)	5.6
Color temperature (K)	6000K
Lumen	1560
Lamp type	Accessories / Services
Technology	LED
Adjustable LED trim	No

ML9350

PS24W POWER SERIES LED LAMPS
12V, 5.6W, 1560 LUMEN (per kit), **21 CHIP** 2835



PG20-3



Technical specifications

ECE code	PS24W
Base	PG20-3
Vehicle type	Cars
Volt	12
Power supply (Volt)	10-16
Power (Watt)	5.6
Color temperature (K)	6000K
Lumen	1560
Lamp type	Accessories / Services
Technology	LED
Adjustable LED trim	No

ML9370

HB3 POWER SERIES LED LAMPS
12V, 5.6W, 1560 LUMEN (per kit), **21 CHIP** 2835



P20d



Technical specifications

ECE code	HB3 (9005)
Base	P20d
Vehicle type	Cars
Volt	12
Power supply (Volt)	10-16
Power (Watt)	5.6
Color temperature (K)	6000K
Lumen	1560
Lamp type	Accessories / Services
Technology	LED
Adjustable LED trim	No

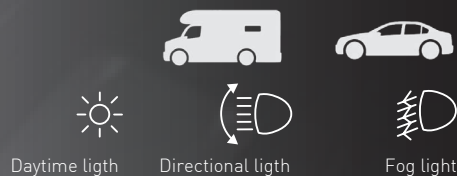
NOTE: The lumen value indicated refers to the total value emitted by both lights and therefore indicates the total per set of lamps

ML9380

HB4 POWER SERIES LED LAMPS
12V, 5.6W, 1560 LUMEN (per kit), **21 CHIP** 2835



P22d



Technical specifications

ECE code	HB4 (9006)
Base	P22d
Vehicle type	Cars
Volt	12
Power supply (Volt)	10-16
Power (Watt)	5.6
Color temperature (K)	6000K
Lumen	1560
Lamp type	Accessories / Services
Technology	LED
Adjustable LED trim	No

ML9390

P21W POWER SERIES LED LAMPS
12V, 5.6W, 1560 LUMEN (per kit), **22 CHIP** 4014SMD



BA15s



Technical specifications

ECE code	P21W (1156)
Base	BA15s
Vehicle type	Cars
Volt	12
Power supply (Volt)	10-16
Power (Watt)	5.6
Color temperature (K)	6000K
Lumen	1560
Lamp type	Accessories / Services
Technology	LED
Adjustable LED trim	No

ML9400

P21/5W POWER SERIES LED LAMPS
12V, 5.6 / 1.0W, 780/140 LUMEN, **22 CHIP** 4014SMD



BAY15d

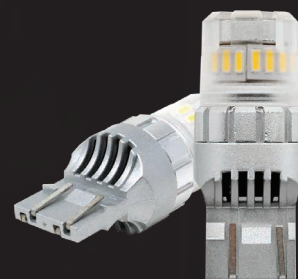


Technical specifications

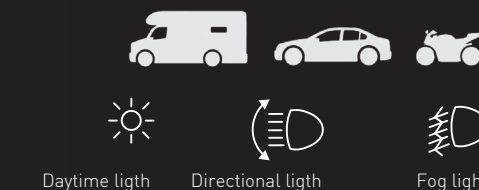
ECE code	P21/5W (1157)
Base	BAY15d
Vehicle type	Cars, Motorcycles
Volt	12
Power supply (Volt)	10-16
Power (Watt)	5.6 / 1.0
Color temperature (K)	6000K
Lumen	780/140
Lamp type	Accessories / Services
Technology	LED
Adjustable LED trim	No

ML9410

W21/5W POWER SERIES LED LAMPS
12V, 5.6 / 1.0W, 780/140 LUMEN, **22 CHIP** 4014SMD



W3x16q



Technical specifications

ECE code	W21/5W (7443)
Base	W3x16q
Vehicle type	Cars, Motorcycles
Volt	12
Power supply (Volt)	10-16
Power (Watt)	5.6 / 1.0
Color temperature (K)	6000K
Lumen	780/140
Lamp type	Accessories / Services
Technology	LED
Adjustable LED trim	No

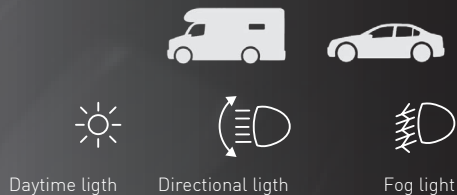
NOTE: The lumen value indicated refers to the total value emitted by both lights and therefore indicates the total per set of lamps

ML9420

P13W PG18.5d-1 POWER SERIES LED LAMPS
12V, 5.6W, 1560 LUMEN (per kit), **21 CHIP** 2835



PG18.5d-1



Technical specifications

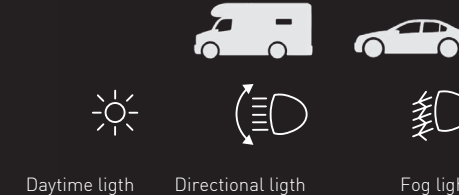
ECE code	P13W
Base	PG18.5d-1
Vehicle type	Cars
Volt	12
Power supply (Volt)	10-16
Power (Watt)	5.6
Color temperature (K)	6000K
Lumen	1560
Lamp type	Accessories / Services
Technology	LED
Adjustable LED trim	No

ML9430

PSX26W PG18.5d-3 POWER SERIES LED LAMPS
12V, 5.6W, 1560 LUMEN (per kit), **21 CHIP** 2835



PG18.5d-1



Technical specifications

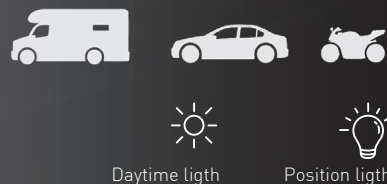
ECE code	PSX26W
Base	PG18.5d-1
Vehicle type	Cars
Volt	12
Power supply (Volt)	10-16
Power (Watt)	5.6
Color temperature (K)	6000K
Lumen	1560
Lamp type	Accessories / Services
Technology	LED
Adjustable LED trim	No

ML9440

W5W POWER SERIES LED LAMPS
12V, 2.3W, 500 LUMEN (per kit), **6 CHIP** 2835



W2.1x9.5d



Technical specifications

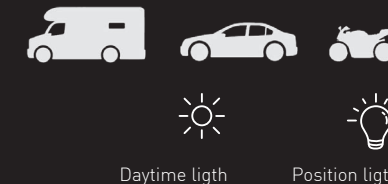
ECE code	W5W
Base	W2.1x9.5d
Vehicle type	Cars, Motorcycles
Volt	12
Power supply (Volt)	10-16
Power (Watt)	2.3
Color temperature (K)	6000K
Lumen	500
Lamp type	Accessories / Services
Technology	LED
Adjustable LED trim	No

ML9450

W16W POWER SERIES LED LAMPS
12V, 6.0W, 1600 LUMEN (per kit), **15 CHIP** 4014SM



W2.1x9.5d



Technical specifications

ECE code	W16W
Base	W2.1x9.5d
Vehicle type	Cars, Motorcycles
Volt	12
Power supply (Volt)	10-16
Power (Watt)	6.0
Color temperature (K)	6000K
Lumen	1600
Lamp type	Accessories / Services
Technology	LED
Adjustable LED trim	No

NOTE: The lumen value indicated refers to the total value emitted by both lights and therefore indicates the total per set of lamps

ML9460

POWER SERIES LED LAMPS **SILURO 31MM**
12V, 2W, 540 LUMEN (per kit), **6 CHIP** 2835



Daytime ligh



Position ligh



31mm



SV8.5-8

Technical specifications

ECE code	C5W
Base	SV8.5-8
Vehicle type	Cars, Motorcycles
Volt	12
Power supply (Volt)	10-16
Power (Watt)	2.0
Color temperature (K)	6000K
Lumen	540
Lamp type	Accessories / Services
Technology	LED
Adjustable LED trim	No

ML9470

POWER SERIES LED LAMPS **SILURO 36MM**
12V, 2W, 540 LUMEN (per kit), **6 CHIP** 2835



Daytime ligh



Position ligh



36mm



SV8.5-8

Technical specifications

ECE code	C5W
Base	SV8.5-8
Vehicle type	Cars, Motorcycles
Volt	12
Power supply (Volt)	10-16
Power (Watt)	2.0
Color temperature (K)	6000K
Lumen	540
Lamp type	Accessories / Services
Technology	LED
Adjustable LED trim	No

ML9480

POWER SERIES LED LAMPS **SILURO 39MM**
12V, 2W, 540 LUMEN (per kit), **6 CHIP** 2835



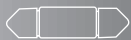
Daytime ligh



Position ligh



39mm



SV8.5-8

Technical specifications

ECE code	C5W
Base	SV8.5-8
Vehicle type	Cars, Motorcycles
Volt	12
Power supply (Volt)	10-16
Power (Watt)	2.0
Color temperature (K)	6000K
Lumen	540
Lamp type	Accessories / Services
Technology	LED
Adjustable LED trim	No

ML9490

POWER SERIES LED LAMPS **SILURO 41MM**
12V, 2W, 540 LUMEN (per kit), **6 CHIP** 2835



Daytime ligh



Position ligh



41mm



SV8.5-8

Technical specifications

ECE code	C5W
Base	SV8.5-8
Vehicle type	Cars, Motorcycles
Volt	12
Power supply (Volt)	10-16
Power (Watt)	2.0
Color temperature (K)	6000K
Lumen	540
Lamp type	Accessories / Services
Technology	LED
Adjustable LED trim	No

NOTE: The lumen value indicated refers to the total value emitted by both lights and therefore indicates the total per set of lamps

Can-Bus stabilizers

Stabilizers series MSTAB and MSTAB PLUS (+), for solving any problems inherent to the lamp failure signal and the light on / flashes.



STABILIZERS

Stabilizers series MSTAB of easy installation thanks to the multiple available “plug & play” connectors and the small size of the control unit.

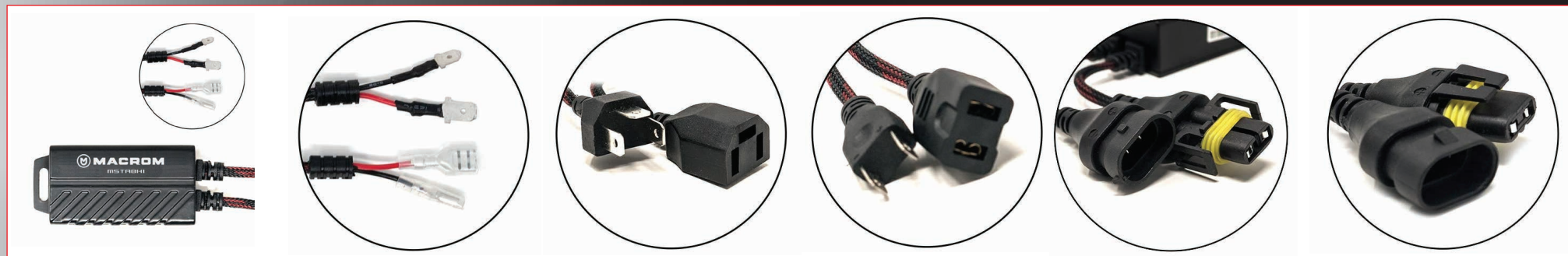
MSTABH1

MSTABH4

MSTABH7

MSTABH8

MSTABHB3



COMPATIBLE WITH DIFFERENT CAR BRANDS

H1/H3/D1/D2/D3/D4 12Volts

H4 12Volts

H7 12Volts

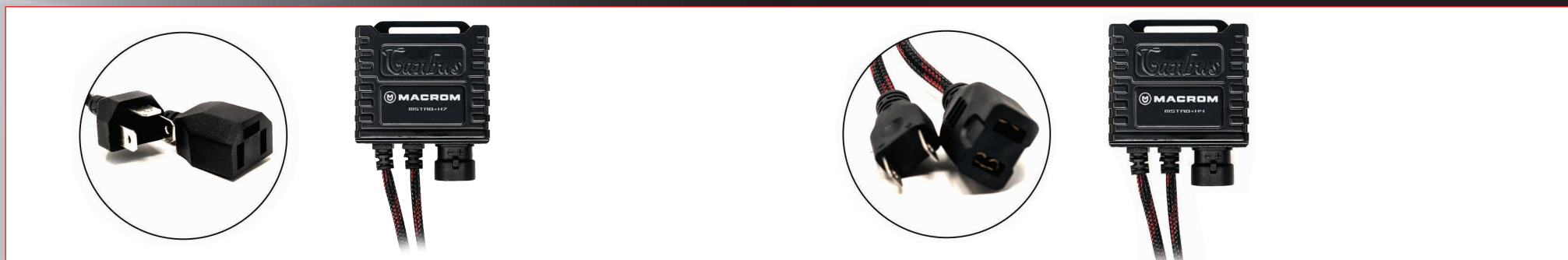
H8 12Volts

HB3 12Volts

Stabilizers series MSTAB **PLUS (+)** series, generally used for problems such as switching on/off warning light on cars.

MSTAB+H4

MSTAB+H7



POWERFUL CAN-BUS STABILIZER FOR LED **H4 12Volts**

POWERFUL CAN-BUS STABILIZER FOR LED **H7 12Volts**

NOTE: The MSTA control units can be used on cars and motorcycles with 12 Volts power supply voltage (10 to 18 Volts working voltage) **NOT COMPATIBLE WITH VEHICLES POWERED WITH 24Volts**

ACCESSORIES Turn off lights

Series of resistors available in various impedances and powers to remedy any failures reported by the vehicle's body computer.



TURN-OFF LIGHTS

MSS50



PAIR OF RESISTANCES
TURN-OFF LIGHT - **XENON PLUG**

MSS50.2



PAIR OF RESISTANCES
TURN-OFF LIGHT FOR LAMPS
70w / 75W **24 VOLT (100W 12 Ω)**

MSS50CS



PAIR OF RESISTANCE
TURN-OFF LIGHT **50W 6 Ω**
WITH WIRES

MSS54



PAIR OF RESISTANCE
TURN-OFF LIGHT **25W 25 Ω**
WITH WIRES

MSS54.2



PAIR OF RESISTANCE
TURN-OFF LIGHT **21W 24 Volt**
50W 35 Ω

MSS57



PAIR OF WIRED RESISTORS
H7 - 50W 6 Ω

MSS59



PAIR OF WIRED RESISTORS
H4 - 50W 6 Ω

MSS60



CAN-BUS CONVERTERS
PLUG & PLAY FOR LAMPS
W5W (T10) COMPAT. C5W

MSS67



PAIR OF TURN-OFF LIGHT FOR
LAMPS **21 / 5W COMPATIBLE FCA**
GROUP (N91)

MSS68



1 RELAY TURN-OFF LIGHT KIT +2
RESISTANCES FOR **MKH LED KIT**

www.macrom.it



MACROM

G.M.A. ITALIA s.r.l. Via G. Di Vittorio, 7/33 - 20017 - Rho (MI) Italy Tel. 02-33406189



MACROM

G.M.A. ITALIA S.r.L.

Via G. Di Vittorio 7/33 - 20017 - Rho (MI) Italia

www.macrom.it