

# CAR Atmosphere LED

## User Manual

CAL 64 Kit Car Atmosphere Led (64 colors)  
CAL 256 Kit Car Atmosphere Led (256 colors)

**MACROM** GMA ITALIA s.r.l,  
Via G. Di Vittorio, 7/33 - 20017 - Rho (MI) Italia  
Tel .+39 02 3340 6189

[www.macrom.it](http://www.macrom.it)

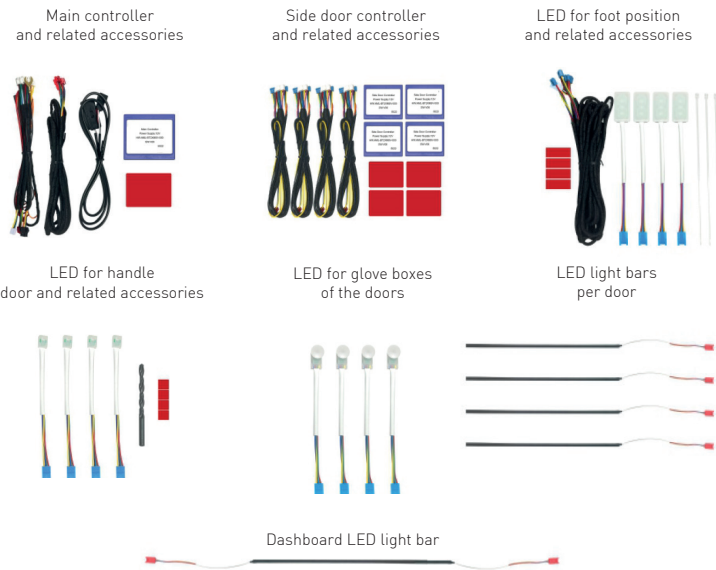
### Product information

The CAL64 / CAL256 device is composed of a control unit (MAIN) and 4 units called (SIDE DOOR) to be positioned in each individual door of the vehicle.

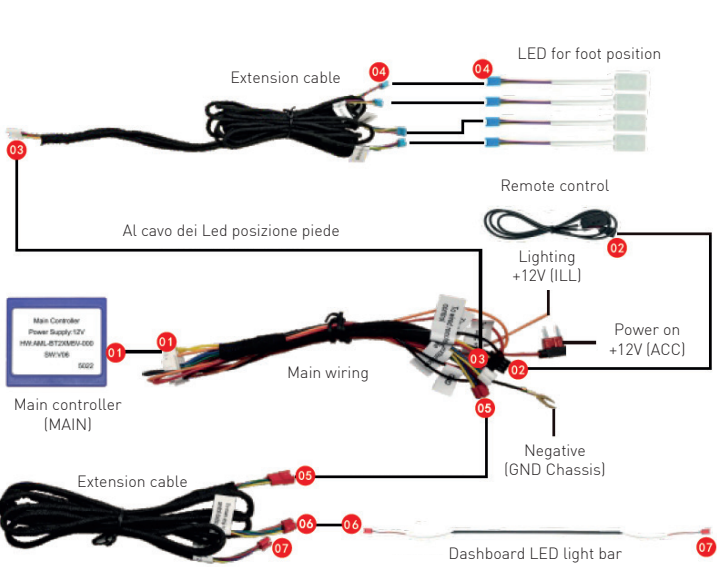
The individual Side Door devices will wirelessly receive information from the main unit without the aid of connections between them. To each unit it is possible to connect an LED bar, a reflector with LED for the handle compartment and an LED for the object compartment.

The main control unit manages 4 positions for footwell lighting, two LED strips for the dashboard and a remote control for the lighting effects.

### Package contents



### Main unit connection diagram



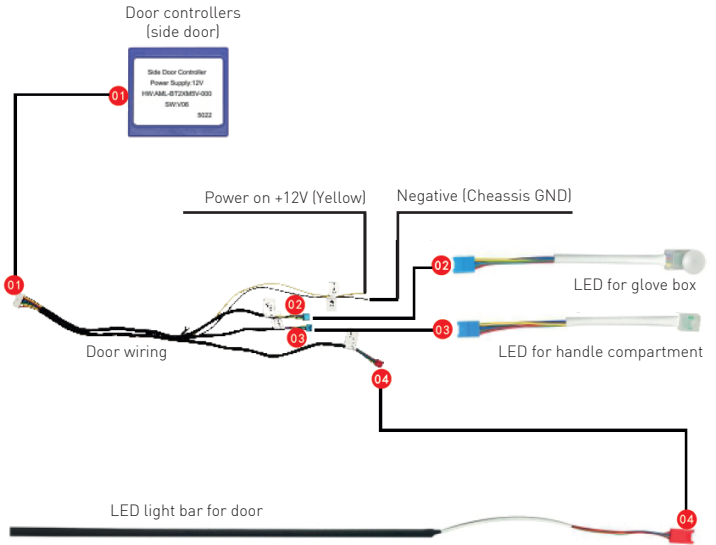
### Index

Index .....	01
Main features .....	01
Warranty .....	02
Safety information .....	02
Important notes .....	02
Main features .....	02
Product information .....	03
Package contents .....	03
Main unit connection diagram .....	04
Side door connections diagram .....	05
Remote control .....	06
Control application .....	07
Bluetooth device pairing (1/2) .....	08
Bluetooth device pairing (3/4) .....	09
Main functions .....	10
Color intertwine .....	11
Settings and light modes .....	2
Configuration via remote control .....	13
Configuration via application .....	14

### Main features

- Multicolor LED lighting.
- Wireless connection between control unit and peripherals.
- Dashboard setup with two LED bars.
- Setup for 4 doors with LED bar, handle compartment and storage compartment.
- Remote control for lighting effects.
- Smartphone application.
- Universal system for all cars.

### Side door connections diagram



### Warranty

Thank you for purchasing this Macrom product. Please read this instruction manual carefully so that you know the correct operation of the product. After reading the instructions, keep the manual in a safe place for future reference. If the product requires assistance, please refer to the store where it was purchased or the local distributor in your country. The warranty does not cover accidental damage due to improper use or installation, incorrect power connections or damage caused to the vehicle.

### Safety information

Before starting the installation, disconnect the cable from the negative terminal of the battery to avoid short circuits during the installation. This device must be installed correctly by a Macrom authorized installer. Improper installation can damage the unit and/or vehicle. Check the electrical connections and driveability of the vehicle before installation.

### Important notes

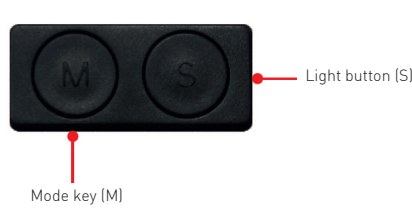
LED bars are multicolored lighting systems for the car interior. Do not place the bars in areas where they could compromise visibility while driving.

1. Device suitable for DC 9-16V vehicles.
2. The device requires professional installation.
3. Route the wiring away from heat sources and electrical components.
4. It is recommended to check the position of the LEDs before drilling the vehicle panels.
5. After installation, carry out an operation test.

### Technical specifications

Power: ..... 10-30W  
Supply voltage: ..... 9-16V DC  
LED light strip voltage: ..... 5V  
Colours: ..... 64 for CAL64 model  
..... 256 for CAL256 model  
Lifespan: .....→5000 hours

### Remote controller



### FUNCTIONS

- Mode key (M)**
- (1) Start: short press
  - (2) Power off: long press
  - (3) Mode switch after startup, short press:  
"Color sequence"  
Red → Yellow → Green → Cyan → Blue → Purple → White → Automatic (64 colors)  
Gradual (gradual color change)  
Lightning (burst color change)  
Happy rhythm → Relaxing rhythm → Red ring
  - (4) Turn off the dashboard light strip:  
long press for 2 seconds
  - (5) Turn on the dashboard light strip:  
long press for 2 seconds

- Light button (S)**
- (1) You can use this button to adjust the brightness of the ambient light.
  - (2) There are 10 brightness levels available:  
Level 0: Minimum luminous intensity.  
Level 10: Mass luminoma intensity.

Control application

Installation:

- (1) Download and install the “LAMP&FRGN” APP on your smartphone. The applications are available from the Apple Store and Google Play Store.

Frame the QR code to download the LAMP&FRNG application.



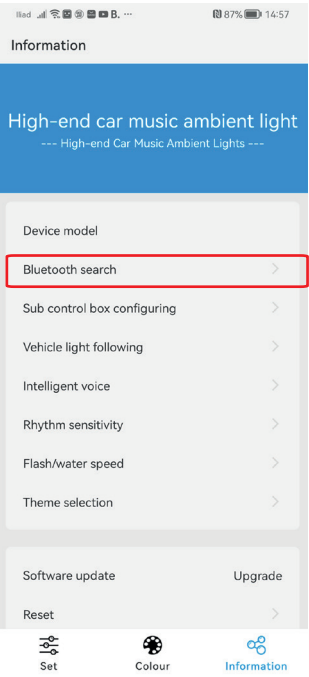
- (2) Bluetooth connection steps:  
Use your smartphone to search for the Bluetooth device “Pocket Link C”, proceed with pairing and connection.

Click [Settings] → [Bluetooth Search] → [Bluetooth Search] → [Pocket Link C] → [Connected]

Bluetooth pairing (1 → 2)

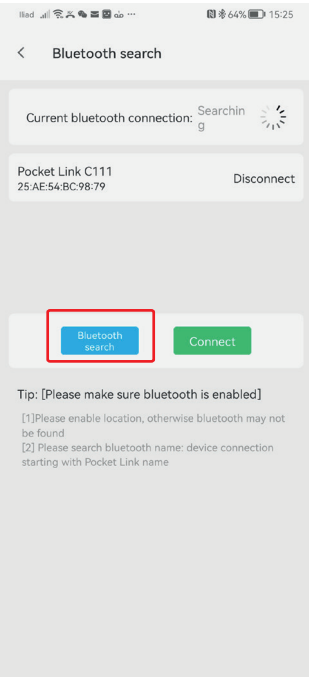
Step 1

Select [Bluetooth search] to access the search for the BT device to connect to the application.



Step 2

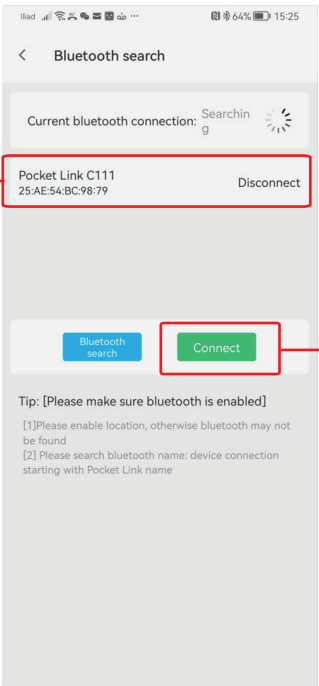
Press [Bluetooth search] to start searching for the device.



Bluetooth pairing (3 → 4)

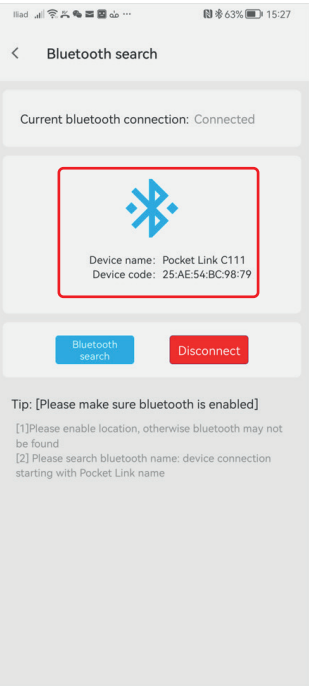
Step 3

Select the desired device in the box (1) and confirm the connection by pressing Connect in the box (2).



Step 4

Once connectivity is complete, the BT symbol and the name of the connected device will be shown in the center of the application. If you want to proceed with disconnecting the device, press Disconnect.



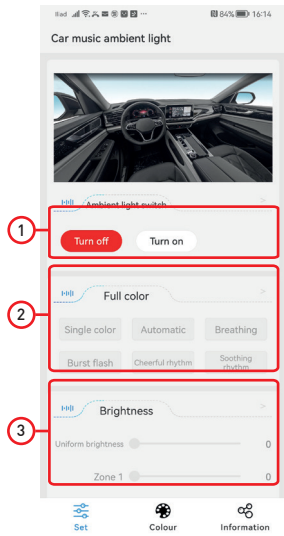
Main functions

1) FULL COLOR

Ambient light switching (On/Off)  
Using the Turn On/Off button you can activate or deactivate the ambient light via your smartphone.

(2) FULL COLOUR

You can set the ambient light to work in the mode you want.  
Single color:  
In “Single Color” mode you can select the desired color.



**Automatic:**  
In “Auto” mode, the light color will gradually change colors.

**Breathing:**  
In “Breathing” mode the light intensity varies from minimum to maximum.

**Burst flash:**  
In “Flash” mode the light flashes.

**Cheerful rhythm:**  
In “rhythm” mode the lighting will flash according to the music or voice being played in the car.

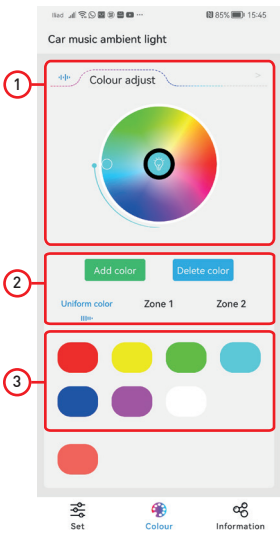
**Soothing rhythm:**  
In “relaxing” mode, the lighting will flash slowly and softly according to the music or voice playing in the car.

**Note:**  
Select [Settings] ==→ [Rhythm sensitivity] to adjust the sensitivity of the response level to the volume of the music/voice.

(3) Brightness

You can set the ambient brightness separately and independently for each section.  
Uniform: General control of zones 1 and 2.  
Zone 1: Light control of the LED bars.  
Zone 2: Luminous control of the glove compartment and door handle.

Color interface



**Uniform color:**  
Sets the colors of all lights uniformly

**Light strips:**  
Set the color of the dashboard light, light strip and door light strip respectively.

**Other lights:**  
Set the color of the door handle light, glove box light and footwell light respectively.

**Area 1:**  
You can choose any color you want on the color wheel (64 colors)/(256 colors) depending on the model.

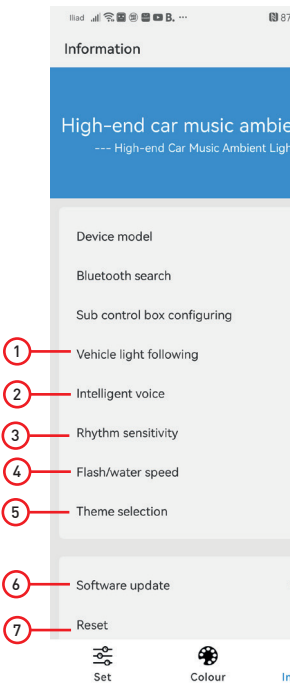
**Area 2:**  
Provision for 7 colors, click the corresponding color to view it in ambient light.

**Area 3:**  
(1) After selecting any color in the color circle of area 1, click the “” button to save the desired color in area 3.

(2) Click on several saved custom colors to change the coloring.

(3) Select the unnecessary color, click “Delete Color” to delete the customized color.

Settings and light modes



(1) Vehicle light  
By activating this function, the operating status of the ambient lights follows the status of the car lights.  
Note: The lighting service wire (Orange) must be connected to the vehicle’s light control wire.

(2) Intelligent voice  
This function is present only for the CAL256 model  
You can then configure the voice control settings.

(3) Sensitivity to rhythm  
It is possible to set the sensitivity of the ambient light to the rhythm of the music (0 least sensitive, 7 most sensitive)

(4) Flash speed  
Set how often the ambient light flashes  
1 is the slowest flashing  
10 is the fastest flashing

(5) Selection of the theme  
Choose different themes for the app.

(6) Reset  
Software Version

(7) Reset  
This function is present only for the CAL256 model  
Restore default settings.

Configuration via remote control

Manual configuration

If the system is malfunctioning, it is possible that it will be necessary to pair the individual units manually.

(1) Pairing between the main unit (Main) and the side controllers (Side Door).  
In the off condition, long press the mode button (M) for 10 seconds:

01. If the main unit works correctly, while the secondary unit does not work correctly, you can proceed with manual pairing. (Applicable to all secondary units)

02. The manual pairing process takes approximately 5 seconds, during which the ambient light will flash white.

03. If pairing is successful, all lights will be red.  
If pairing fails, all lights will be blue.

04. If manual pairing fails once, re-pair.

**Note:**  
In the case of simultaneous installations of several cars, the coupling may be disturbed between units of the cars close together.

Configuration via application

Manual configuration

It is possible to manually configure the main unit (Main) and controllers sides (Side Door).

Please follow the steps below:  
1. Select “Sub control box configuring” from the checkbox.  
2. Press [Clear sub control box] before proceeding with configuration.  
“Clear success” notice will be shown in the box (1) of the application.  
3. By pressing [Configured sub control box] to execute the new configuration, a “Configured success” notice will be shown in the box (2) of the application.

If necessary, repeat the previously reported operation to perform a new system configuration.

