

INSTALLATION GUIDE

M-FA1003DUC8

Installation kit for Ducato 8-9

Metal brackets, cover and finishing cap for
Macrom T1003DAB

Compatible models

- DUCATO 8-9 Vehicle
- T1003DAB Multimedia Car Stereo



MACROM

Product overview

Assembled mask



Mask components

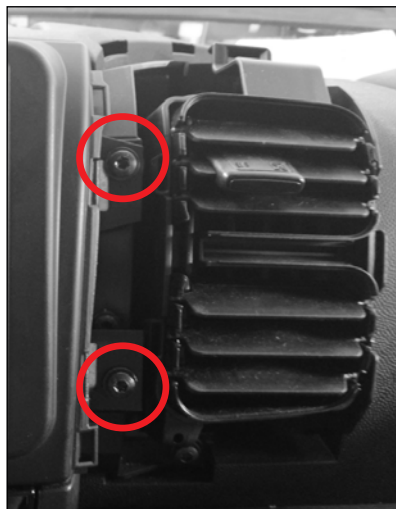
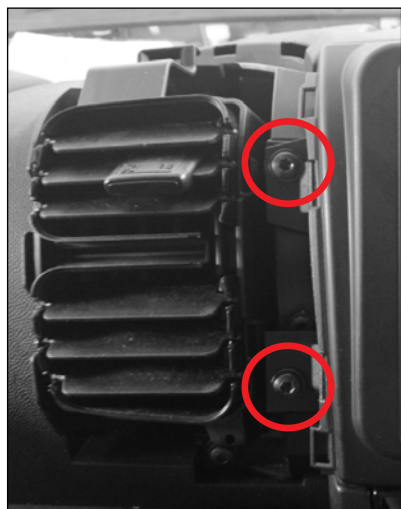


Original radio removal

If the vehicle is equipped with a radio, first remove the air vents to access the fixing screws. Using suitable plastic tools, lever around the vents and pull towards the passenger compartment.



Once the decorative cover of the vents has been removed, you can proceed to remove the original radio by unscrewing the 4 screws indicated.



Temporarily disconnecting the monitor

Before inserting the radio unit into the frame and mounting brackets, disconnect the monitor by removing the plastic cover on the back (figures 1 and 2).

N.B.: Do not insert the radio unit into the frame before removing the monitor.

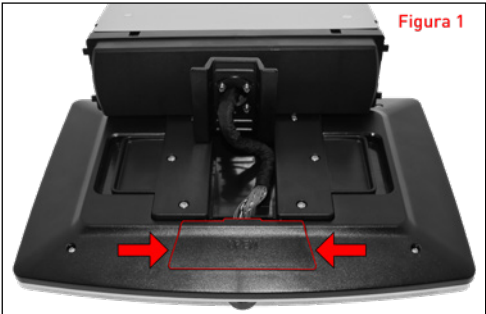


Figura 1

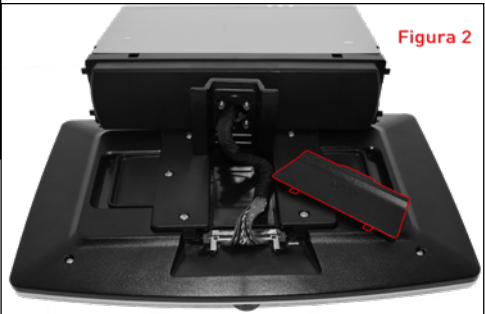


Figura 2

Next, while holding down the two side tabs, disconnect the flat connector that connects the monitor to the radio body (Figures 3 and 4).

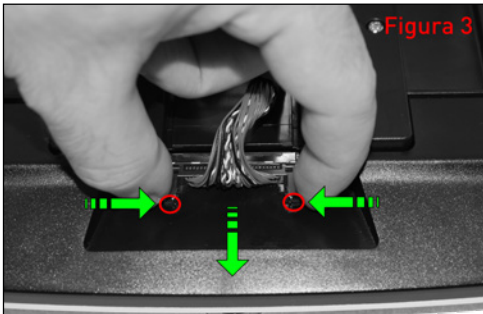


Figura 3

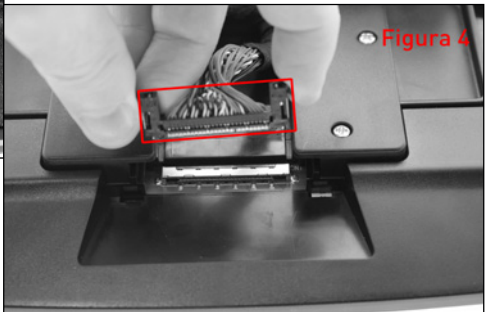
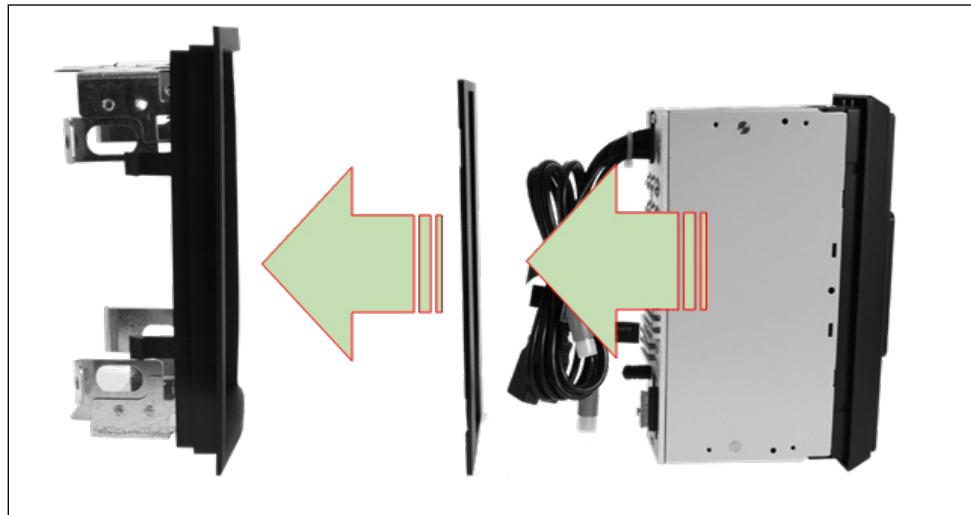


Figura 4

Fixing the radio

Kit assembly steps:

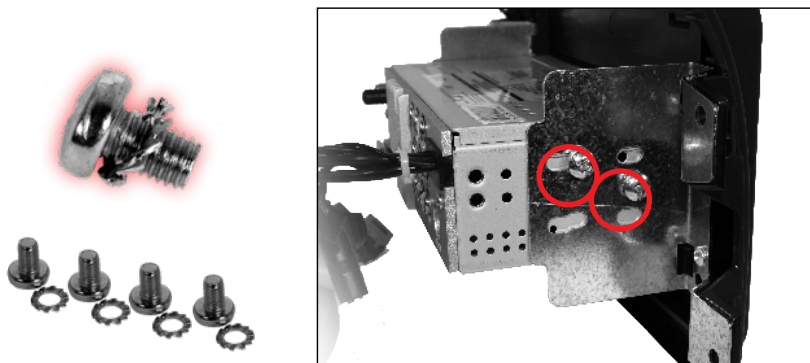
1. Position the frame and secure the brackets in the vehicle's radio compartment.
2. Position the cover inside the frame.
3. Remove the original radio panel.
4. Insert the radio into the cover and secure it with screws.



5. Reconnect the monitor flat cable, taking the utmost care.

Ensure that all connections have been made correctly. Perform a functional check of the product and then proceed with securing the car radio. Using the 4 screws provided (**bolts + toothed washers**), secure the radio body to the brackets. Insert the radio finishing frame and install the monitor.

IMPORTANT NOTE: It is essential that the toothed washer is used when securing the radio.



Frame and radio installation

Once the radio has been assembled to the frame, you can proceed with the installation.



Ensure that all connections have been made correctly. Perform a functional check of the product and then proceed to secure the car radio.

Insert the frame with the radio into the dashboard compartment and use the four screws removed earlier to secure the cover and radio body.



Monitor adjustments

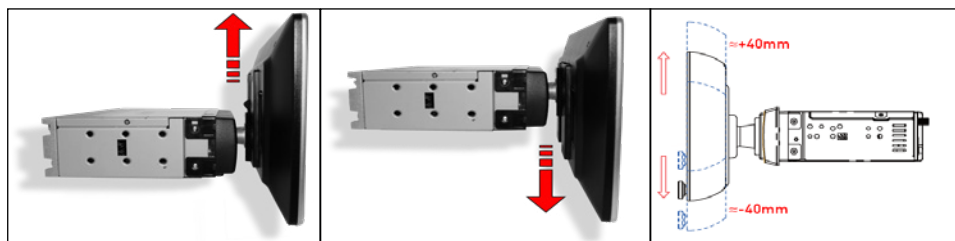
In addition to the features included in the product, you can adjust the tilt and vertical position of the monitor to suit your needs:



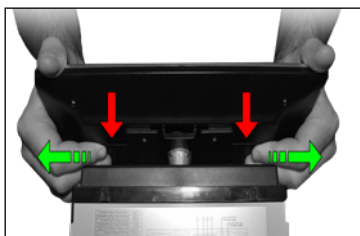
HORIZONTAL TILT - By firmly grasping the sides of the radio and applying slight pressure to the right or left side, you can tilt the monitor horizontally up to a maximum of 30° .



VERTICAL TILT - By firmly grasping the sides of the radio and applying slight pressure to the top or bottom, you can tilt the monitor up to a maximum of 30° .



VERTICAL ADJUSTMENT - By firmly grasping the handles on the rear of the monitor and pulling them outwards, you can raise or lower the monitor by up to 40mm.





GMA ITALIA s.r.l.

Via G. Di Vittorio, 7/33 - 20017 - Rho (MI) Italia

Tel. +39 02 3340 6189

www.macrom.it