

WIRELESS KIT

USER MANUAL

CAMWBR

Magnetic wireless video camera with integrated battery manageable via App



MACROM

Installation

- Before completing the installation, temporarily connect the wiring and make sure it works properly.
- Use only the parts included with the unit to ensure proper installation.
Using parts not included in the package may cause malfunctions.
- Avoid installing the unit in places subject to high temperatures, such as direct sunlight, hot air, or where it would be subject to dust dirt or excessive vibration.
- Be sure to remove the front protective film after installing the unit.

Magnetic camera installation

Choose the position of the camera on the vehicle and make sure that the surface on which it will be placed is metal.

To ensure proper adhesion, do not place the camera on uneven or rough surfaces.

However, it is good practice to clean the surface before applying the magnetic camera.



APP Installation

Before using the videocamera, you need to install the AI CAM application on the smartphone you want to use for viewing images.

Scan the QR code with QR Scanner or another app, open the link in your web browser, then download it via the App Store or Google Play and proceed with the installation.



Application
AI CAM



Smartphone requirements:

Compatibility with iPhone iOS 10.1 or later required.

Compatibility with Android OS 4.0.3 or later required.

Connections

WiFi antennas

1. Connect the Wifi antennas paying attention to the operating frequency shown on the antenna (A) 2.4Ghz, (B) 433Mhz.



USB charging cable



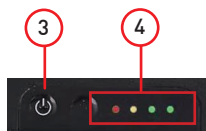
Power Supply

1. To charge the battery of the camera it is necessary to connect the USB type C to a charger with an output voltage of DC 5V and a current of 2A.

NOTE: Before using the camera, make sure it is fully charged
Charging time may vary depending on the actual charge of the product.
Maximum recharge time about 9 hours.
The battery charger is not supplied.

Power button and charging indicators

2. On the side of the video camera you will find the Power button and battery charge indicators.
3. Power button (On/Off)
4. Battery charge indicators 25%-50%-75%-100%



Wi-Fi Connection

Connection

1. Access the Wifi settings of the smartphone and select the Wifi network generated by the "AICAM" camera

Default WiFi name: AI CAM_***

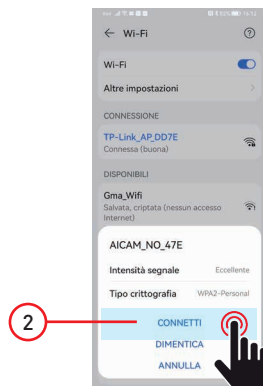
Note:

Default WiFi name: AI CAM_***

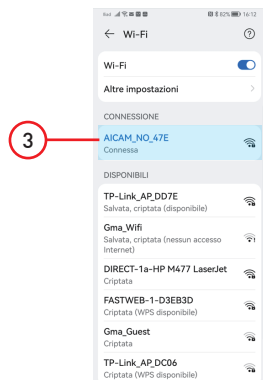
The first wifi connection requires a password consisting of "88886666", while subsequent wifi connections do not require a password.



2. Press CONNECT to proceed with connecting the smartphone to the camera.



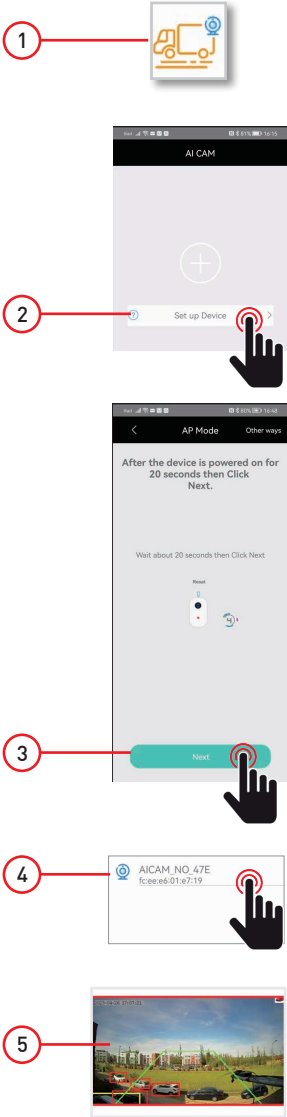
3. Confirm connection made.



Connection to the device

Device selection

1. Open the AI CAM application to access the settings
2. Select the device you want to connect to your smartphone via "Set up Device"
3. After selecting the camera, wait for 20 seconds for the connection settings to be defined.
Press NEXT to continue the connection.
4. Confirm the selection of the camera you want to view on your smartphone.
5. The smartphone display will show you the video camera image.



Note:

If the rear view camera goes out of range of the Wifi network generated by the smartphone, it is necessary to repeat the operations described above.

Note:

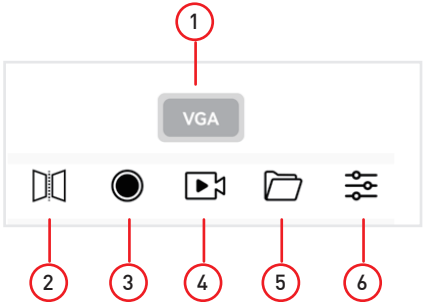
The distance may vary according to the power of the smartphone's Wifi module.

First of all, check that the Wifi network is connected before connecting with the smartphone.

Camera settings

Main menu

- 1. Resolution VGA / HD
- 2. Mirror image rotation
- 3. Image shot
- 4. Video recording
- 5. Folder containing videos and pictures
- 6. Custom settings

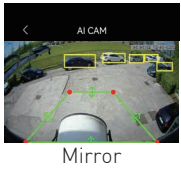
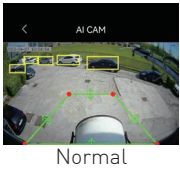


Custom settings

- 1. Image Rotation (Normal / Mirror)
- 2. Acquisition speed (Bit rate)
- 3. Detection area
- 4. Linee guida
- 5. Sound alarm
- 6. Brightness
- 7. Color saturation



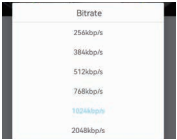
1. Image rotation



2. Acquisition speed (Bit rate)

Image capture speed can be modified with the following parameters:

- 256kbp/s
- 384kbp/s
- 512kbp/s
- 768kbp/s
- 1024kbp/s
- 2048kbp/s



Note:

The higher the acquisition speed, the better the quality of the image displayed on the screen.

Camera settings

3. Detection zone

You can change the object and people detection zone according to your area control needs.

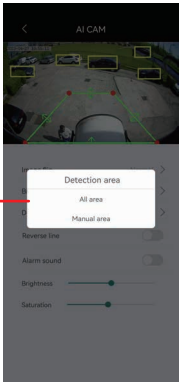
Total Area



Manual Area

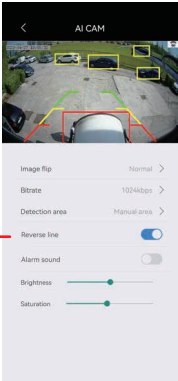


Use the points and arrows to define the area to check.



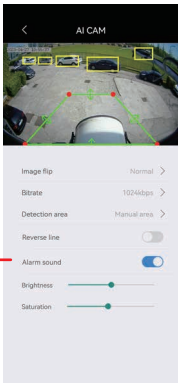
4. Guidelines

It is possible to activate the vision of the guidelines which allow to indicate to the driver the trajectory that the vehicle on which the video camera is installed will travel.



5. Sound alarm

It is possible to activate the acoustic alarm which warns when a pedestrian enters the previously defined area.



6. Brightness

Brightness control

7. Color saturation

Color saturation control



Specifications

Smartphone requirements

iPhone	iOS 10.1 or later
Android.....	OS 4.0.3 or later

Recording.....	
Video.....	Mp4
Images.....	JPG

WiFi

Integrated WiFi	2.4G wireless
Network range	2403-2480MHz
Distance	≤ 10m in open field

Note: The distance may vary according to the power of the smartphone's Wifi module

Camera

Sensor	1/3" AHD
Resolution	720P VGA / 1280 HD
Viewing angle.....	110°[H] 140°[D]
Waterproof	IP68
Night lighting	IR (infrared)
Night vision distance	5 meters

Battery

Battery capacity	7000mAH
Charging time	8 ore
Operating time	10 ore
Charging power supply.....	USB Type-C
Type of battery charger	DC 5V - 2A
Battery charge indicators	25%-50%-75%-100%
Installation	By magnet wrapped with rubber case

