

AMPLIFIED SUBWOOFER

USER MANUAL

M-SW200A



MACROM

Table of contents

Warranty	3
Safety information	3
Specifications	3
Product overview	
Front panel	4
Power terminals	4
Product installation	
RCA line input	5
High level input	6
Remote control	7
Installation	7
Product care	7
Declaration of Conformity	8

Warranty

Thank you for purchasing this Macrom product. Please read through these operating instructions so you will know how to operate your model properly. After you've finished reading the instructions, keep this manual in a safe place for future reference. Should your product need warranty service, please return it to the shop where you buy it or to the Macrom distributor in your country. The warranty does not cover damage due to improper use and or installation, incorrect connections to power supply and audio video sources, exposure to excessive humidity, unauthorized repair attempts or modifications.

Safety information

Before beginning with installation, disconnect the wire from the battery ground terminal to prevent any short during installation. This subwoofer must properly installed by Macrom authorized installer. Improper installation may damage the unit and /or the vehicle. Verify all electrical and drivability of the vehicle before the installation.

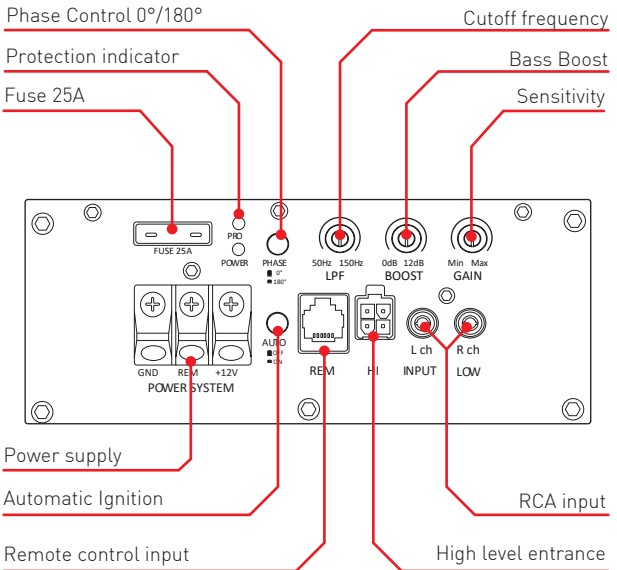
Specifications

M-SW200A play a music from a RCA line or from a High level input.

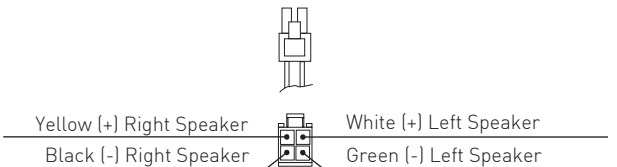
Bass Reflex speaker configuration
Speaker size, 8" (200mm)
200 Watt RMS Class A/B amplifier
Frequency range (Low pass) 50Hz to 150Hz
Phase rotation: 0° / 180°
Signal to noise ratio → 100dB
Input sensitivity:
- RCA: 90mV to 2.9V
- High level: 0.5V to 10V
Maximum current consumption 25A.
Operating voltage 9Volts to 15.5Volts
Product dimensions: 260 x 315 x h 275mm
External remote control included

Product overview

Amplifier front view



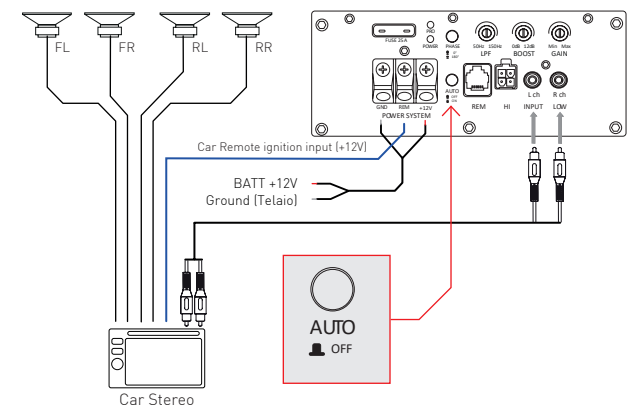
High level connector



Product installation

Connect the power wires to the terminal block, pay attention to respect cable polarity indicated on the product.
Connect the signal input RCA method 1.

RCA line input method 1



Follow the installation instructions and wiring connection to ensure the integrity of the product.

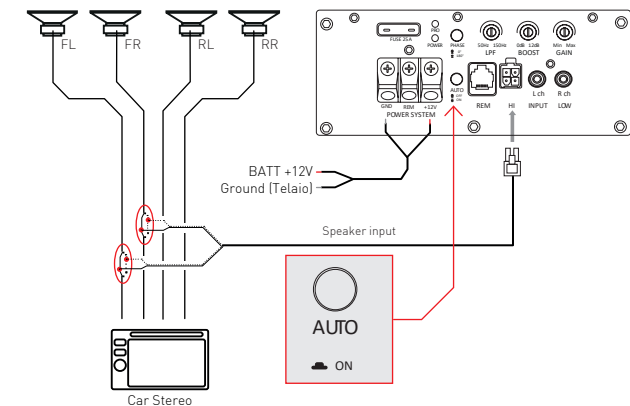
- When using the RCA inputs, the high level input must not be used.
- To turn on the subwoofer, you must connect the remote power.
- To turn on the Subwoofer, set the AUTO switch to the Off position

Adjust the frequency cutting and the level input sensitivity. Place all the knobs in the center position, and start adjusting the gain and follows the frequency cutting to optimize the best match vehicle acoustics.

Product installation

Connect the power wires to the terminal block, pay attention to respect cable polarity indicated on the product.
Connect the signal input according High level method 2.

High level input method 2



Follow the installation instructions and wiring connection to ensure the integrity of the product.

- When using the high level inputs, the RCA input must not be used.
- Do not connect the remote power on, as the amplifier automatically turns on by detecting the input signal.
- To turn on the Subwoofer, set the AUTO switch to the ON position

Adjust the frequency cutting and the level input sensitivity. Place all the knobs in the center position, and start adjusting the gain and follows the frequency cutting to optimize the best match vehicle acoustics.

Remote control

To adjust the volume while listening to music turn the volume knob from remote level control. Please remember that excessive sound pressure can damage the speaker.



Installation

Place the speaker on one of the sides of the trunk, taking care not to obstruct the ventilated front door of the Reflex duct.



To fix the speaker we recommend using a Velcro adhesive or with the help of two metal brackets.

Product care

Please remember that your Macrom product is an electronic device, and so needs to be treated with care:

- Do not subject it to mechanical shock or vibrations.
- Do not subject it to excessive heat.
- Keep it away from water and excessively humid areas.
- Keep it away from high electromagnetic fields.

There are no user-serviceable parts inside. Opening the product or try to repair it will terminate the warranty.

Declaration of conformity

The manufacturer GMA ITALIA s.r.l. declares that the type of Rear Camera models M-SW200A brand Macrom - are complies with Directive 2014/53 / EU.

The full text of the EU Declaration of Conformity is available at the following Internet address:
www.macrom.it, or at
GMA ITALIA s.r.l. - V. Di Vittorio, 7/33 Rho - 20017 (MI) Italy

Made in China by
GMA ITALIA s.r.l. - V. Di Vittorio, 7/33 Rho - 20017 (MI) Italy

INFORMATION ON DISPOSAL OF UNITS

This product bears the selective sorting symbol for waste electrical and electronic equipment (WEEE). This means that this product must be handled to the local collecting points or given back to retailer when you buy a new product, in a ratio of one to one (or one to zero if the external dimension is less than 25 cm) pursuant to European Directive 2012/19/EC in order to be recycled or dismantled to minimize its impact on the environment. For further information, please contact your local or regional authorities. Electronic products not included in the selective sorting process are potentially dangerous for the environment and human health due to the presence of hazardous substances. The unlawful disposal of the product carries a fine according to the legislation currently in force.

MACROM

GMA ITALIA s.r.l.
V. Di Vittorio, 7/33 - 20017 - Rho (MI) Italia
Tel. +39 02 3340 6189

www.macrom.it