



M-SW200A 500WPEAK POWER



8 inch subwoofer in reflex box with 200W RMS amplifier built-in

When the desire for bass is great, but you don't want to sacrifice your trunk, the solution is the M-SW200A amplified subwoofer.



A cubic speaker in "Reflex" configuration with a 200mm speaker and an integrated amplifier, can be easily placed in the trunk of the vehicle.

The 200W RMS Class AB amplifier, housed in the rear of the speaker, boosts deep, precise bass, with easy access to the auto-sensing high-level or line (RCA) inputs and sound-optimizing controls.

With the help of the external remote control it is possible to modify in real time the audio output level of the subwoofer.





M-SW200A 500WPEAK POWER



8 inch subwoofer in reflex box with 200W RMS amplifier built-in



Features

- Class AB power amplifier
- Output power 200W RMS
- Frequency cut-off from 50 to 150HZ
- Input sensitivity
 - RCA from 100mV to 2V
 - High level greater than 2V
- Phase rotation 0/180°
- Signal to noise ratio > 80dB
- Bass amplification (Bass Boost) 0 → +12dB
- Automatic power on On/Off
- Supply voltage 9 /12V
- Maximum absorption 25°
- Dimensions 260 x 315 x H275mm

- EAN: 8053839214959
- Master box
 - Unit: 1 piece
 - Gross weight: 7.6 Kg
 - Volume: 0.044 MC



M-SW200A 500WPEAK POWER



☐ Product overview

Prospective



Back



Front



Side



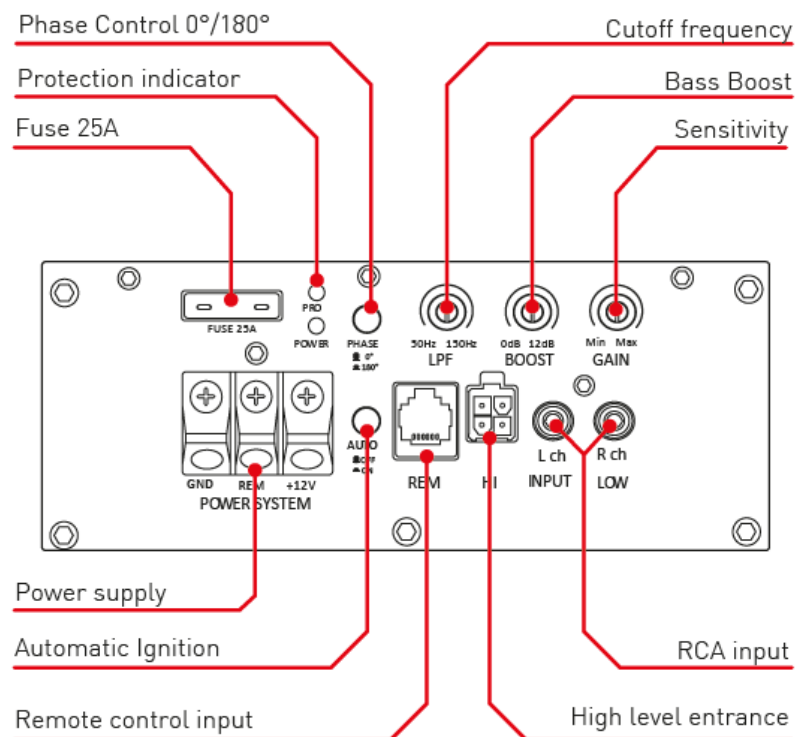


M-SW200A 500WPEAK POWER



❑ Amplifier

Equipped with essential controls for precise and easy sound adjustment: input sensitivity adjustable between 100mV and 2 volts, frequency cutoff adjustment from 50 to 150Hz, Bass Boost to emphasize low frequencies, phase control 0 / 180°, make the device an indispensable complement to the vehicle's audio system.





M-SW200A 500WPEAK POWER

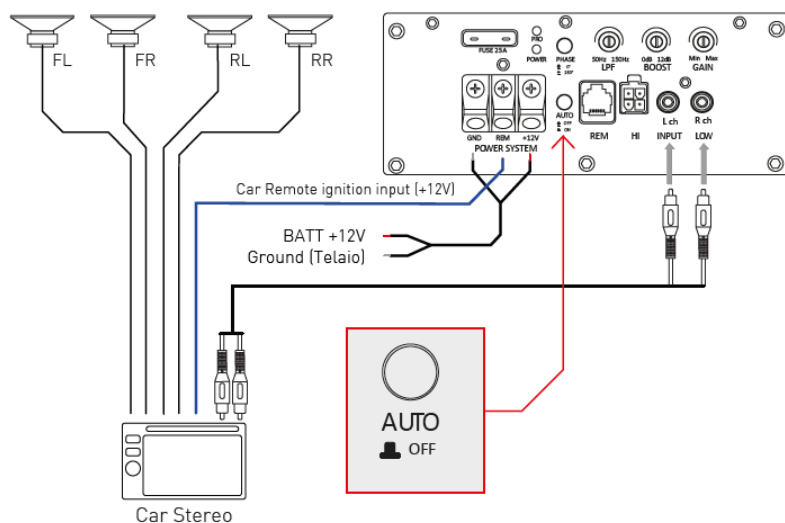


❑ Configurations

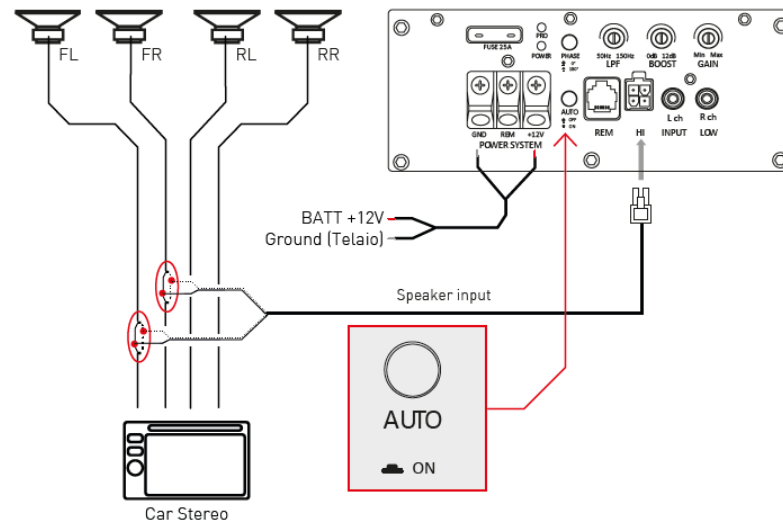
The amplifier inserted in the rear part of the box, offers easy access to the high-level or line inputs (RCA). Depending on the car's audio system, it is possible to determine the most appropriate audio input to manage the subwoofer.

The auto-sensing function automatically turns on the device without the aid of a remote control (+12V) from the radio.

RCA Input



High level input





M-SW200A 500WPEAK POWER



❑ Installation

Thanks to its small size (260 x 315 x H275mm), installation is compact and immediate with great performance.

